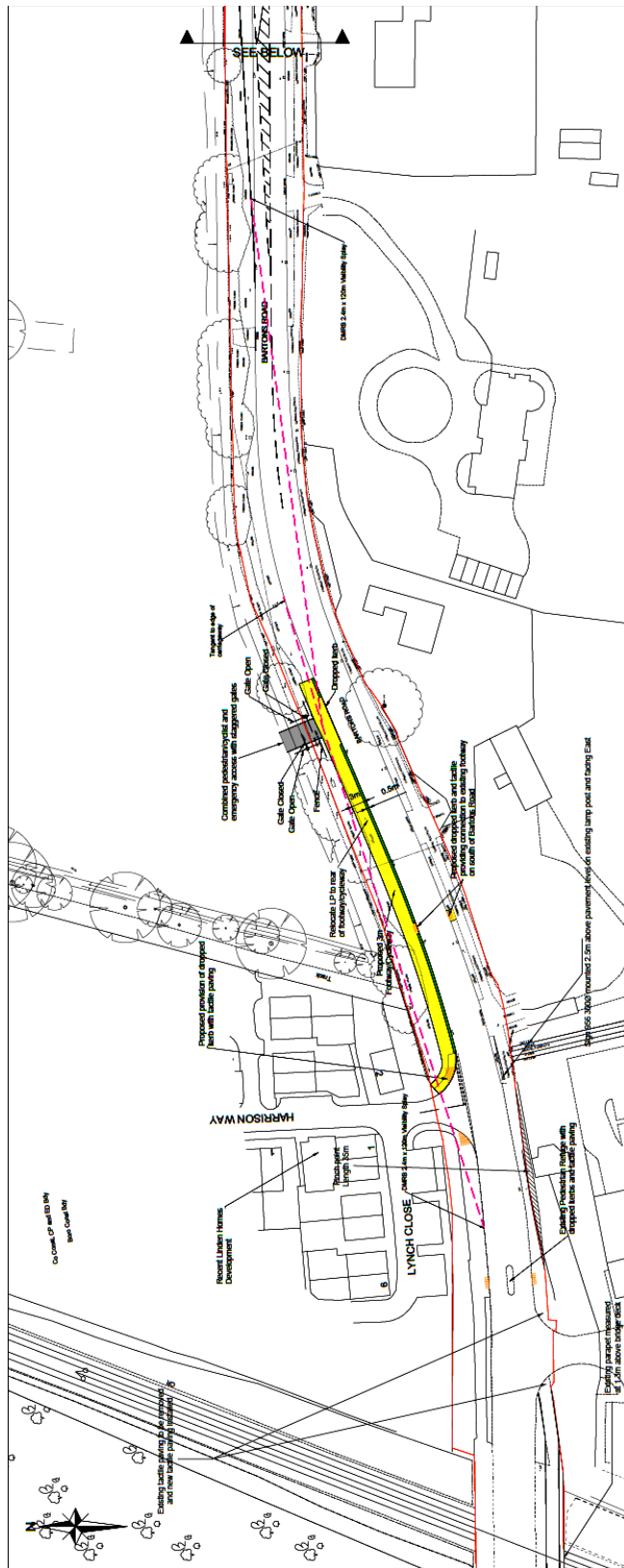


HIGHWAY WORKS



KEY

Note 1 : The proposed layout assumes prior implementation of the access arrangements as approved for planning application (APP/15/01435) in drawing 14-018-002 and cycle provision improvements as shown in drawing 14-018-015.

- Proposed 2m Footway and 3m Footway/Cycleway
- Proposed Carriageway
- Proposed Traffic Island
- Proposed 0.5m Strip between Carriageway and Shared Footway/Cycleway
- Highway Boundary